

Waterstop Plug

Fast Set * Non-Shrink * Leak Seal Compound

Description

A fast setting, cement powder that stops water leaks in concrete and masonry - fast. It is used where patching compounds and conventional mortars would be washed away and other resin based putties will not bond.

Uses

Waterstop Plug may be used in conjunction with Chemind CrystalSeal, Chemcote W, Epocote F100W and Water-Bar 150 PU injection grout, where constant dampness and water seepage presents a problem.

Waterstop Plug is used to stop leaks in tunnels, lift pits, basements and tanks even under extreme conditions. It is also used to repair spalled, defective or boney concrete, where water seepage is a known problem.

Features

- Stops water flow under extreme pressure
- Prevents further damage within structures
- Once cured it will withstand continuous pressure, exposure to moisture or total immersion
- It has similar physical characteristics to concrete
- Non-shrink, stable and permanent repair.
- Simple application – add water and rapid set
- Easy to mix powder, contains no chlorides

Typical Properties

Appearance	Dark coloured powder
Initial Set @ 20°C	Fast Cure Grade 60 seconds Slow Cure Grade 3 minutes
Compressive Strength	10 MPa (> 1 hour) 40MPa (ultimate)
Peak Exotherm	40°C approx.
PH of Mixed Product	11

Preparation

Surfaces to be sound and clean - flush with water to remove debris. Dampen dry surfaces before repair.

Chase cracks to 20 mm wide and 20 - 30 mm deep - width of chase should not exceed depth. Do not form "V" chase. Undercut sides to give maximum binding strength for plug. Holes should be routed to 20 mm wide x 20 mm deep.

Mixing & Precautions

- Wear rubber gloves and eye protection during mixing, handling and application. Avoid contact with skin.
- Add clean water to powder in a clean container at ratio of approximately 3 parts Waterstop Plug to 1 part water to achieve desired consistency..
- Mix only small amounts quickly into putty consistency.
- Do **NOT** attempt to re-work any partially set material.
- Excess water will reduce strength and delay set time.

Application

Leaking Holes: Use Fast Cure grade – mix, pack and hold in place with firm pressure for 60 sec. until set.

Leaking Cracks: Use Fast Cure grade – start at least active or highest point, work in stages to the most active or lowest point. In final section of crack, insert a short length of 15mm plastic tube into the remaining (leaking) end of chased crack and pack /seal in place with Waterstop Plug. This relieves water pressure on the repair. Remove tube and insert the last plug to fully seal off water flow.

Dry Repair: Use Slow Cure grade for high-strength repair. Waterstop Plug may be applied directly as a dry powder to pack into wet voids or to dry-up "sweating" surfaces.

Packaging

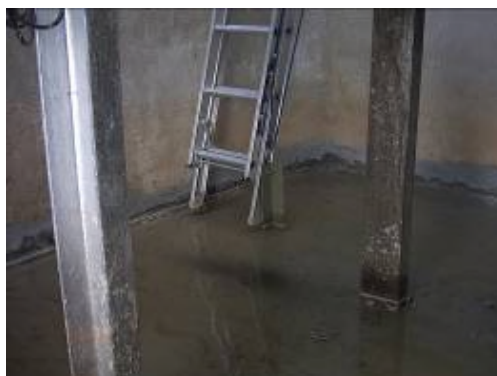
Waterstop Plug is packed in 15 kg, 5 kg and 2.5 kg cans.

Shelf Life

Stored in a cool, dry place unopened or resealed pails have a shelf life of 1 year from date of manufacture.

Clean-up

Remove uncured Waterstop Plug with water.



HEAD OFFICE
74 Annie Street
ROCKLEA QLD 4106
AUSTRALIA
Ph: (+617) 3255 5755
Fax: (+617) 3255 5991
ABN: 63 250 804 992