

Epocote F100W HD

Water Based Epoxy Coating System

Description

Chemind Epocote F100WS HD system is a unique premium quality, zero VOC, tough, water based multi-purpose, two-pack epoxy flooring and coating system with exceptional physical characteristics.

Uses

Epocote F100W HD water based epoxy system is ideal for floor or wall applications in car parking stations, plant rooms, showrooms, food process plants, workshops etc.

Specific applications include:

- chemically resistant, hardwearing surface sealer to factory floors, plant rooms and general storage areas
- total vapour barrier on concrete floors to prevent moisture vapour damage to floor finishes

Epocote F100W HD is a unique, multi-use, two-component, epoxy resin system, applied as a smooth or slip resistant surface to provide hygienic, chemically resistant, hard wearing coatings and flooring finishes. It can be used as:

- A low build (0.1 mm minimum), roll-on flooring that can be left as a smooth finish on floors and walls or made non-slip for floors.
- A base coat for seamless flooring systems.

Features

Epocote F100W HD has a number of unique features and product qualities including:

- May be applied to slightly damp concrete
- Has physical properties that are vastly superior to traditional water based epoxies and similar to the conventional bisphenol based epoxies.
- Easy to maintain, seamless, hygienic
- Easy to apply and fast drying
- Excellent chemical and solvent resistance
- Excellent abrasion resistance
- Smooth and slip resistant finishes
- Multi-purpose – gloss, satin or non-slip roll-on

Design a Total Waterproofing Envelope package with Chemind waterproofing systems.

NOTE

Chemind offers a comprehensive range of quality epoxy systems, providing a wide range of finishes for various applications.

Chemind epoxy flooring systems can be designed to meet wide ranging service requirements in combination with its construction waterproofing and decorative coatings.

Contact Chemind Construction Products Technical Department for selection and specification advice as well as for contact details of specialist applicators in your area.

Technical Data

Colour	Colour or Clear		
VOC	0.0g/litre		
Mix Ratio (volume) Base : Activator	Colour 3:1	Clear 2.5:1	Fast Cure 1:1
Solids Content	60% (approx)		
Pot Life @ 20°C	1 hour		
Tack Free Time	8 hrs @ 20°C		
Application Humidity	70% RH or below		
Application Temperature	10°C to 35°C		
Maximum Recoat Time	16 - 20 hrs @ 20°C		
Thinning for use	Up to 25% clean water		

Preparation

Surfaces must be sound, smooth, and free from dust, oil, grease or other contaminants. Repair defects.

Non-porous, dense concrete should be etched with diluted phosphoric acid and flushed clean with water or otherwise mechanically abraded.

Concrete should be cured for 28 days and have a moisture content of 4% or less. Moisture testing of concrete prior to installation is recommended.

Resurfacing of old epoxy floors or re-coating of Epocote F100W HD after recoat window will require thorough mechanical abrasion of the surface to ensure good adhesion.

Application

Mixing

For pre-portioned kits, add the Activator (smaller volume) into the Base container (**never in the reverse order**) – use low speed electrical mixer to blend to a uniform, creamy emulsion.

For part kit use – confirm mix ratio then measure the required quantity Epocote F100W HD Base carefully into a clean container large enough to allow mixing. Measure required amount of Activator accurately, add it to the Base and mix carefully.

Water Addition

Normal Cure grade (3:1 ratio) - should have up to 2 litres water added to RFU consistency.

Clear and Fast Cure grades – after mixing may be blended with clean water to desired application viscosity. Over thinning or adding water before Base and Activator are fully mixed, will result in poorly cured film and diminished physical properties.

Roll-On Application

Epocote F100W HD mixed and diluted as above, should be applied in two coats by roller or brush. Total coverage should be approx 3 m²/litre.

Non-Slip Flooring

Broadcast silica sand into first coat of wet Epocote F100W HD to give the required slip resistant finish. Allow to dry overnight before removing any surplus sand and applying the final coat. Mesh size of sand can increase quantity of Epocote F100W HD needed to achieve desired finish.

Colours

Epocote F100W HD is available in a standard mid-grey colour. Factory manufactured special colours are available on request. Check with Chemind representative for any specific requirements.

NOTE

- Protect from condensation and water for at least one week at 20°C. Protect from chemical exposure for 14 days.
- High humidity or a severe temperature drop may cause changes to surface appearance of freshly applied product.
- Remove chemical spills immediately, scrub the surface and allow floor to dry completely.

Packaging

Epocote F100W HD is packed:

- Clear 3.5 litre kits
- Normal Cure 8 litre kit
- Fast Cure 12 litre kits

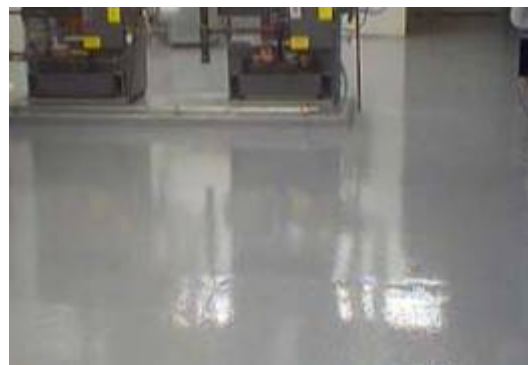
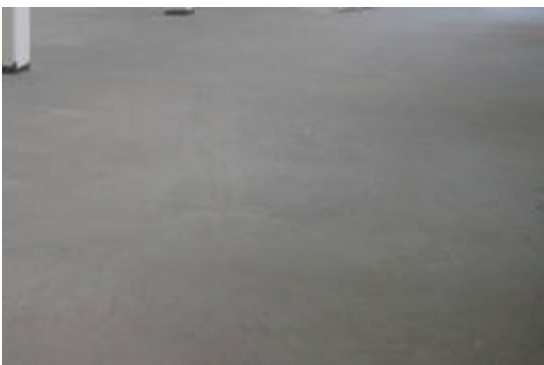
Shelf Life

Unopened or resealed partly used containers have a shelf life of 2 years, when stored in a dry, cool place.

Clean-up

Remove any uncured Epocote F100W HD with water or partially cured product with Chemind GP Solvent. Exercise care when using solvents.

Please review MSDS before use.



HEAD OFFICE
74 Annie Street
ROCKLEA QLD 4106
AUSTRALIA
Ph: (+617) 3255 5755
Fax: (+617) 3255 5991
ABN: 63 250 804 992