

Chemflex

One-Part Elastomeric Polyurethane Sealant

Description

Chemflex is a high performance elastomeric joint sealant based on proven polyurethane elastomer technology.

Chemind Chemflex is a neutral cure system that reacts on exposure to atmospheric moisture.

When cured it forms a durable waterproof seal, which makes it suitable for most applications.

Uses

Chemind Chemflex is a multi-purpose adhesive sealant with a wide cross section of use in construction and industrial application.

It is ideal for sealing joints in concrete panels, tiles, fibrous cement products, external cladding panels, block work and brickwork.

Chemflex is used for gap and crack filling, angle fillets, bedding hobs and sealing outlets before application of Chemind primers and the full waterproof membrane system.

It is also used as:

- gap filler between window or door frames
- adhesive for shower hobs before waterproofing
- Adhesive for ceramic tiles subject to impact

It is suitable for use with most of the Chemind waterproofing membrane systems. Refer to [Compatibility](#) for details.

Chemflex has excellent adhesion to most surfaces including concrete, brickwork, natural and artificial stone, steel, aluminium, wood, ceramic tiles, rigid plastics and fibre cement sheet.

Features

Chemflex has excellent adhesion to most surfaces including concrete, brickwork, natural and artificial stone, steel, aluminium, wood, ceramic tiles, rigid plastics and fibre cement sheet.

- Complies with **Green Star** requirements
- Non-Hazardous – low VOC
- Good UV resistance, long life
- Single-pack - no mixing
- Low modulus for high movement
- Total adhesion - no water tracking
- Hard wearing, permanently flexible
- Can be painted after full curing has occurred

Grades

Chemflex is available in two grades:

Chemflex LM (low modulus) and

Chemflex FC (fast cure).

- **Chemflex LM** is a low modulus sealant suitable for most general-purpose needs including internal angle fillets and gap filling.

It is the most appropriate grade for high performance, movement joints.

- **Chemflex FC** is a tough, fast cure grade and is used in situations that require quick access or for exposed joint filling, which is potentially subject to damage, such as bathrooms, trafficable floors and decks.

Typical Properties

Property	Chemflex LM	Chemflex FC
Curing Method	Moisture Cure	Moisture Cure
Appearance	Thick Paste	Thick Paste
Tack Free Time	6-12 hrs	45 min
Cure Time (24hr)	2 mm	3.5mm
Hardness Shore A	30 ± 5%	50 ± 5%
S.G.	1.27-1.3	1.27-1.3
Service Temp	-40 °C to 80 °C	-40 °C to 80 °C
Application Temp	5 °C to 35 °C	5 °C to 35 °C
Elongation at Break	>900%	>650%
Tensile Strength	>1.3N/mm ²	>2.1N/mm ²
Elastic Recovery	90%	90%
Joint Movement	± 25%	± 25%
Full Cure (on porous surface)	7 days	7 days

NOTE

For special applications and service needs not covered in Chemflex product data, contact Chemind Technical Department.

Preparation

Surfaces must be sound, smooth, dry and free from dust, oil, grease or contaminants.

Non-porous surfaces should be degreased using Chemind GP Solvent.

In deep gaps and movement joints, use Chemind Chemflex Backing Rod open-cell polyurethane foam.

Good adhesion can be achieved on clean, dry, uncontaminated concrete, brickwork, timber, metals, ceramics and most coating surfaces without use of primers. However, adhesion to some surfaces may be improved by use of a primer. For any specific application needs contact Chemind Construction Products Technical Department.

Application

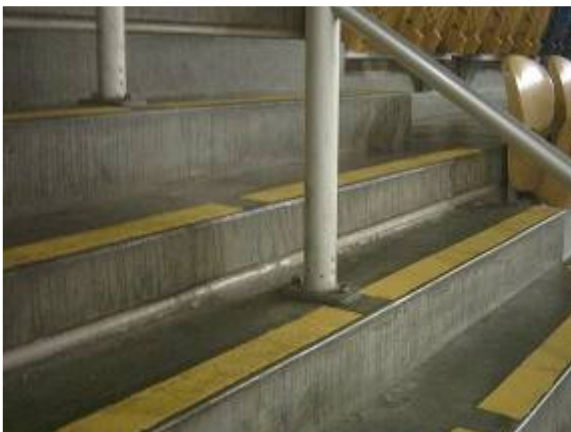
- Apply Chemflex using a manually or electrically operated closed-barrel caulking gun.
- Insert bag into gun, cut top of the bag, replace end cap and use.
- Extrude sealant firmly into joint to ensure complete contact on joint faces.
- Smooth as required with a spatula and diluted detergent to give a flat or concave surface.

Compatibility

Chemflex is compatible with most Chemind membranes as angle fillets, bond breaker, or gap filler before primer and membrane application or to seal flashings and frames installed subsequently including:

Aquagard Blue, Aquagard M membranes, Blockflex, Fastflex, Newflex membranes, Proflex TF and Tuffcote Duratop as well as Grace Bituthene membranes.

Do not apply Chemflex polyurethane sealant in contact with Chemind Hydroflex.



Coverage

One 600 ml sausage will supply 12 lin. metres of 10 mm x 5 mm sealant bead.

Usage is dependent on joint dimensions. The correct geometry is:

- joint : width ratio of 1:1 up to 12mm wide
- depth constant at 12mm up to 24mm and
- joint : ratio of 2:1 from 25mm wide

Packaging

Chemflex is supplied in 600 ml foil sausages, with 20 sausages per carton.

Shelf Life

Sausages have a shelf life of 6 months from date of manufacture, when stored in a dry, cool place.

Clean-up

Remove uncured Chemind Chemflex with Chemind GP Solvent.

Chemind GP Solvent may assist with the removal of cured product. Exercise care when using solvents. Please review all MSDS before use.

Handling Precautions

Avoid contact with skin or eyes, and avoid breathing vapours.

Use only in well ventilated areas. If swallowed do not induce vomiting.

Seek urgent medical advice. If in eyes, hold eyes open, flood with water for at least 15 minutes and see a doctor.

If on skin, remove contaminated clothing and wash skin thoroughly with soap and water, or other suitable agent.



HEAD OFFICE
74 Annie Street
ROCKLEA QLD 4106
AUSTRALIA
Ph: (+617) 3255 5755
Fax: (+617) 3255 5991
ABN: 63 250 804 992